



**Aphelele Cele**  
0849087982  
aphelele@foundation.co.za

Contact Fundation Property

073 6601990

Block C  
Bellevue Campus  
5 Bellevue Road  
Kloof

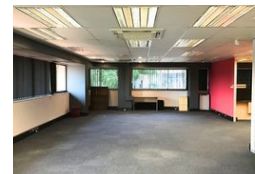
**PROPERTY CURRENTLY  
UNAVAILABLE**

Please contact our specialist Broker  
for more options:

**APHELELE CELE**  
**084 908 7982**  
**aphelele@foundation.co.za**





Web Ref CL506



R141 per m<sup>2</sup>

**Gross Monthly Rental** R38,030 Excl. VAT

 0  0

1 Neptune Road, Westville

1 Neptune Road, Westville

AAA Grade Offices To Let In Westville.

This modern office space is on the ground floor of the sought after Berea West a posh suburban area in Westville, giving tenants M13 Highway exposure. The suburb boasts an array of branded and national businesses providing your business with significant credibility.

The area is surrounded by top retail centres, national brands and businesses and frequent market activity which add to the livelihood of the upmarket suburb.

The office space measures 270m<sup>2</sup> with a magnificent high end fit out, providing a very high standard of environment. The office boasts 4 office units, 1 boardroom, a large open space workplace a reception area, and server room. There is a well sized dry kitchen and separate ablutions.

- 270 sqm

- 4x Offices

## Features

**Zoning** Commercial

### Interior

Air Conditioning Yes

### Exterior

Security Yes

### Sizes

Floor Size 270m<sup>2</sup>

### Extras

Security 24 Hour Access Guard