

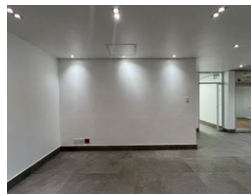


**Aphelele Cele**  
0849087982  
aphelele@foundation.co.za

Contact Fundation Property



073 6601990

Block C  
Bellevue Campus  
5 Bellevue Road  
Kloof



R160 per m<sup>2</sup>

**Gross Monthly Rental** R31,428 Excl. VAT

 0  0

AAA-Ground Floor Office Available in Westway Office Park, Westville.

AAA-Ground Floor Office Available in Westway Office Park, Westville.

Situated in the prestigious Westway Office Park, this office offers a prime location surrounded by national and blue-chip companies. The park enjoys seamless access to the N3 highway and is located within close proximity to the Pavilion Shopping Centre, providing unmatched convenience for both staff and clients.

Office Features:

- Ground floor unit with a dedicated kitchen
- Access to shared verandas on either side of the building entrance (50% use allocated to tenants adjoining each side)
- Shared ablutions on the same floor
- Connected to a building generator, offering reliable backup power (excluding air-conditioning)
- Backup water system providing up to 4 days of supply

## Features

**Zoning** Commercial

### Interior

Air Conditioning Yes

### Sizes

Floor Size 197m<sup>2</sup>

