



Aphelele Cele
0849087982
aphelele@foundation.co.za

Contact Fundation Property

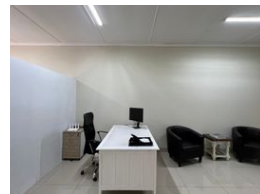
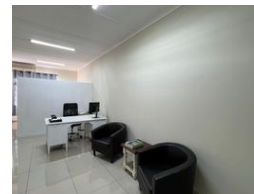
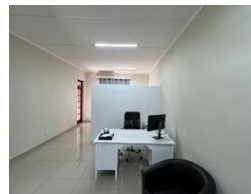
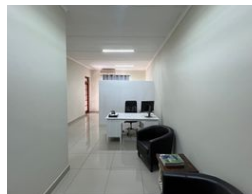
073 6601990

Block C
Bellevue Campus
5 Bellevue Road
Kloof

RENTED

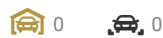


Web Ref CL479



R127 per m²

Gross Monthly Rental R9,350 Excl. VAT



A Grade Office To Let In Gillitts.

This modern office space is on the first floor of a prime retail building, which is situated at the heart of Gillitts, giving tenants M13 Highway Road exposure. The Gillitts area boasts an array of branded and national businesses providing your business with significant credibility.

The suburb is surrounded by top retail centres, national brands and businesses and frequent market activity which add to the livelihood of the upmarket suburb.

The office space measures 74m² with a new fit out, providing a very high standard of environment. The unit boasts 3 Offices, toilet and a kitchenet, and is fully tiled.

- 74 sqm
- 3x Offices
- Fully Air-Conditioned
- Fully Titled

Features

Zoning Commercial

Interior

Air Conditioning Yes

Sizes

Floor Size 74m²

Extras

Built-in Kitchen 24 Hour Access Air Conditioner

