



Jayne Richards
0828723865
jayne@foundation.co.za

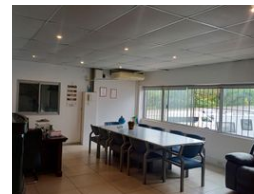
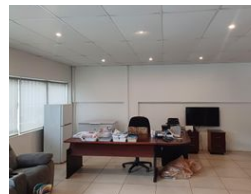
Contact Foundation Property

073 6601990

Block C
Bellevue Campus
5 Bellevue Road
Kloof



Web Ref CL6107



R80 per m²

Gross Monthly Rental R26,160 Excl. VAT



327m² Mini Factory to rent in Waterfall

This well-maintained 327m² mini factory is available to let in a secure and sought-after industrial park in Waterfall. Ideally located adjacent to the park's entrance gate and security office, the unit offers exceptional visibility and convenient access for deliveries.

Key Features:

Prime Location: Positioned near the entrance for maximum convenience and exposure.

Security: 24-hour security within a fully fenced industrial park.

Access: Suitable for 40-foot container truck access.

Warehouse Space: Double-volume warehouse with 7-meter internal height and a 6-meter roller shutter door.

Reception & Amenities: Includes a welcoming reception area, male and female ablutions with shower facilities, a small kitchenette, and a dedicated storeroom.

Power Supply: Equipped with three-phase power.

Features

Zoning Industrial

Interior

Power 3 Phase Yes
Power Amps 60

Exterior

Security Yes

Sizes

Floor Size 327m²
Building Height 7m

