

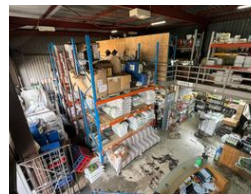
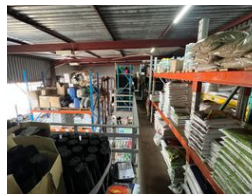


**Jayne Richards**  
0828723865  
jayne@foundation.co.za

Contact Foundation Property



073 6601990

Block C  
Bellevue Campus  
5 Bellevue Road  
Kloof



R70 per m<sup>2</sup>

**Gross Monthly Rental** R22,000 Excl. VAT

 0  0

### 315m<sup>2</sup> Mini factory to let in Westmead

Modern industrial unit located in the sought-after Westmead area, offering excellent accessibility and functional space for a variety of business needs.

#### Key Features:

3-Phase Power – Ideal for light manufacturing or industrial use

1 x Roller Shutter Door – Easy loading/unloading

Roof Height: 6 metres – Suitable for racking or storage

Large Mezzanine – Additional storage or office potential

Truck Access – Ample maneuvering room for deliveries

Drive-Through Access – Practical and efficient traffic flow

Secure Complex – Gated park with security measures

### Features

**Zoning** Industrial

#### Interior

Power 3 Phase Yes

#### Sizes

Floor Size 315m<sup>2</sup>  
Building Height 6m