

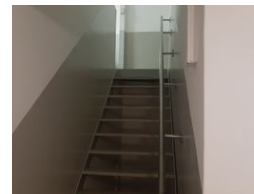
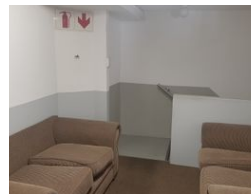


Jayne Richards
0828723865
jayne@foundation.co.za

Contact Foundation Property

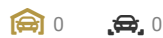
073 6601990

Block C
Bellevue Campus
5 Bellevue Road
Kloof



R85 per m²

Gross Monthly Rental R59,000 Excl. VAT



700m² mini factory with yard to let in Westmead

This versatile ground floor mini factory is perfectly suited for light manufacturing, storage, or distribution operations. Key features include:

5 metre internal clearance for efficient racking or equipment use

Two roller shutter doors allowing easy access and operational flexibility

100 amps three phase power to support a wide range of industrial needs

Small office component for administrative tasks

Approx. 500 m² of exclusive-use yard area, providing excellent access for small trucks and delivery vehicles

With its practical layout and functional amenities, this property is a rare find for businesses seeking a well-equipped industrial

Features

Zoning Industrial

Interior

Power 3 Phase Yes
Power Amps 100

Sizes

Floor Size 700m²