

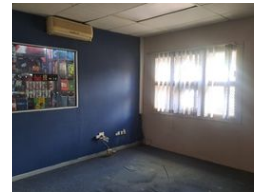


Jayne Richards
0828723865
jayne@foundation.co.za

Contact Foundation Property



073 6601990

Block C
Bellevue Campus
5 Bellevue Road
Kloof



R75 per m²

Gross Monthly Rental R55,500 Excl. VAT

 0  0

740m² Mini Factory to let in Westmead

Now available for lease, this well-appointed top floor mini factory in the heart of Westmead offers functionality, flexibility, and excellent access. Ideal for light industrial users, this property features:

620 m² total factory space, including

120 m² steel mezzanine level

Small office component (flexible – can be increased or reduced to suit requirements)

6.1 metre internal clearance, suitable for racking or light manufacturing

Roller door access for efficient loading/unloading

100 amps of power to support a variety of operations

Exclusive-use 370 m² yard area with container access

Features

Zoning Industrial

Interior

Power 3 Phase Yes
Power Amps 100

Sizes

Floor Size 740m²
Building Height 6m