



Jayne Richards
0828723865
jayne@foundation.co.za

Contact Foundation Property

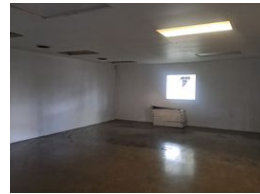
073 6601990

Block C
Bellevue Campus
5 Bellevue Road
Kloof

NEW



Web Ref CL6132



R80 per m²

Gross Monthly Rental R115,200 Excl. VAT

 0  0

Dual mini factory to let in Westmead

Set over two levels, these well presented mini factories each offer exclusive use yard areas and functional layouts, ideal for light manufacturing, storage, or distribution. Conveniently located in Westmead, the properties are available for lease or sale individually or as a package.

Ground Floor Unit – 700 m² + 500 m² Yard (Small Truck Access)

Clear span warehouse of approx. 700 m²

Two roller shutter doors for efficient access

5 metre internal clearance

100 amps three-phase power

Small office component

Exclusive use yard of approx. 500 m² with access for small trucks

Features

Zoning Industrial

Interior

Power 3 Phase	Yes
Power Amps	100

Sizes

Floor Size	1,440m ²
------------	---------------------